

TEACHER'S GUIDE



Exploring Careers in Health Care Field Notes Journal Teacher's Guide:

ACTIVITY INSTRUCTIONS AND ANSWER KEY

The Field Notes Journal includes a collection of hands-on activities and reflection pages that give students a glimpse into the roles and responsibilities of various health care jobs. Please review this script to lead a class through the journal exercises. Adapt the conversational elements to your own phrasing so it feels natural. We want the language to make students feel connected, inspired, and full of potential.

INITIAL REFLECTION

Kaiser Permanente has created these materials to broaden your ideas about careers in the health care field. To start, we ask that you engage in An Initial Reflection. On **page 3** of your Field Notes Journal, you'll find three questions to consider. "What does health care make you think of?" "What jobs do you already know about in the health care field?" and "What questions do you have about health care careers?" Reflect on what you already know and what you are curious to learn. Some questions may be answered as you work through the journal or your perspective around roles available in health care may be expanded. Let's take a few minutes to answer these questions.

INTRODUCTION TO THE CHALLENGE CODE

Next, we will participate in a health care themed challenge. There are five categories of activities. You can see their titles in the Table of Contents of your Field Notes Journal. Each will focus on a category of health care to see if these roles spark your interest. Each challenge will leave you with a clue, and when you put all of the clues together, you'll get a phrase!

After each challenge, we will go to **pages 4-5** in your journal. These pages are titled, "Table of Featured Health Care Careers." Use this table to build a list of potential careers that interest you following each activity.

SURGICAL TEAM: ACTIVITY FOCUS – COMMUNICATION

Classroom Setup: Organize desks into groups of 6

Materials Required: Every group of 6 will need:

- 6 plastic solo cups with a number 1-6 written on each
- 1 rubber band with 6 pieces of string tied to it (string approx. 6 in long)
- 1 set of Surgical Team Role cards, cut so that there are 6 individual cards per table

First is the Surgical Team Challenge. Surgical teams have to effectively collaborate and communicate with one another to achieve a successful patient outcome. Each member of your surgical team should select a role card. Your challenge is to work together to use the rubber band and string tool to stack your cups in numerical order into a 3-2-1 pyramid. The catch is that each person may only touch one string end! Each time a cup is placed, one member of the team will read aloud the job title and description associated with the cup number. That team member will tell one interest or skill that they have which might be beneficial to this role. Turn to **page 7** in your Field Notes Journal to see these directions in print!

To get your word for the adventure phrase, answer this question: What letter is 9th in job 1, 7th in job 2, and 4th in job 6? Write it on the code line on **page 6** of your Field Notes Journal.

[1 MINUTE PAUSE] What did you get?

[IF THEY GOT AN "I"] Yes! Well done! Write that code on the Challenge 1 line on the Code Solution Sheet on **page 6**!

[IF THEY DID NOT GET AN "I"] Double check your work. You should end up with one letter that is the same for each of the clues.

Let's take a moment to reflect on this experience using the Table of Featured Health Care Roles on **page 4** of your Field Notes Journal. Is there a role that is most interesting to you? Why? Use the "My Notes" space on **page 25** to write your thoughts.

[3 MINUTE PAUSE/dependent on time]

ALLIED HEALTH ROLES: ACTIVITY FOCUS - CAREER EXPLORATION

Classroom Setup: Organize desks into groups of 6

Materials Required: Every group of 6 will need:

- Medical Assistant Challenge - set of 10 unique Medical Records
- Obstetric Technician Challenge - set of Surgical Tools, cut into 6 separate squares, and 1 Medical Tray per group

Our next challenge is fast paced and happens to involve careers you can get into quickly! There are many roles in health care that do not require long college commitments, but still are highly involved in important aspects of patient care. Collectively, we call these roles that are non-nurse, non-doctor “allied health.” Many of these roles are specialized. Turn your Field Notes Journal to **page 8**.

Phlebotomists take samples of blood for testing. The blood samples may be needed to learn more about a particular patient, or they may be used in research. Phlebotomists also collect blood from donors for those in need of blood transfusions. Phlebotomists need a high school diploma and a phlebotomy certificate. Use the Main Veins of the Arm image to figure out which vein the phlebotomist should insert the needle into in order to draw blood from the median cubital vein. Write the letter on the line in **page 9** of your Field Notes Journal!

Answer: “F”

[3 MINUTE PAUSE FOR QUESTIONS]

X-Ray Technician, Ultrasound Technician, Mammography Technician, & Nuclear Medicine Technicians all use technology to “see” inside the body. Their images help physicians diagnose and treat patients. These roles require an Associate’s (2 year) degree in the specific technology. Examine the x-ray, ultrasound, mammogram, and nuclear imaging on **page 10** to figure out which two letters can be found in EACH image. Write those on the line in your journal!

Answer: “U” and “T”

[3 MINUTE PAUSE FOR QUESTIONS]

Medical Assistants take medical histories and record vital signs of patients. Medical assistants complete administrative and clinical tasks in the offices of physicians, hospitals, and other healthcare facilities. Their duties vary with the location, specialty, and size of the practice. Medical Assistants need a high school degree. Some Medical Assistant roles require a certificate, diploma or degree from an approved LPN/LVN program.

Each tabletop group should have a set of medical records. Look at the medical records and place in alphabetical order by patient’s last name. When your group is done, figure out what letter is written in red on the fifth record and what letter is written in blue on the eighth record. Record your thinking on **page 11** of your journal!

Answer: “U” and “R”

[3 MINUTE PAUSE FOR QUESTIONS]

Obstetric technicians provide assistance during deliveries, sterilizing equipment, keeping records and examining patients. They ensure cleanliness and efficiency in labor and delivery wards by keeping rooms prepared and monitoring patient health. Obstetric techs need an Associate's degree, which is usually obtained in 2 years. Some roles may require a surgical certification and a CNA license as well. Your task in this challenge is to put the obstetric tools in order on the tray so they are prepped for a procedure. Use the clues on **page 12** to place them correctly!

Answer: "E"

[3 MINUTE PAUSE FOR QUESTIONS]

Now, go back to **page 6** and put them all together to identify the word. As you all are writing your answers, please note that the challenge words are slightly out of order on this page. Please write it in the row that says, "CHALLENGE: Allied Health Roles."

Answer: "FUTURE"

Take a moment to reflect on this experience using the Table of Featured Healthcare Roles in your Field Notes Journal. What stuck with you about Allied Health Roles? **[3 MINUTE PAUSE]**

NURSING CAREERS: ACTIVITY FOCUS - CAREER EXPLORATION

Classroom Setup: Organize desks into groups of 6

Materials Required: Every group of 6 will need:

- Nursing Poster: Levels of Nursing Degrees
- Nursing Poster: You Want to Become a Nurse
- Nursing Poster: Where Nurses Work

Our third challenge is a gallery walk or exploration of careers in nursing. There are a multitude of types of nurses because nurses can be found in every medical specialty area.

During our gallery "walk," you will view a collection of posters. Consider these questions: What surprises you about nursing? What do you still wonder about nursing? What specialty (or specialties) do you see yourself in? You can record your thinking on **page 13-14** in the Field Notes Journal. Ready? Explore the gallery!

[ALLOW 5 MINUTES FOR STUDENTS TO EXPLORE THE POSTERS]

Nice work! Take a moment to reflect on this experience using the Table of Featured Health Care Roles in your Field Notes Journal. What surprised you about nursing? What do you still wonder? What specialties can you see yourself in? **(2 minute pause)**

Now on **page 6**, for the Nursing Careers challenge, we'll give you the clue. Fill in the word "the."

MENTAL HEALTH ROLES: ACTIVITY FOCUS - COLLABORATION AND PROBLEM SOLVING

We are going to move on to activities focused on mental health. In our next challenge, we will investigate mental health professionals. Mental health professionals often have to decode the things people say and do in order to figure out what they really need. In this activity, you will decode the job roles of each of the mental health professionals to find clues. Use **pages 15 and 16** to decode the Morse coded words and figure out what these mental health professionals do.

Go ahead and begin **(5 MINUTES TO WORK)**

Answer:

Social Workers - "terminal"

Psychiatrists - "medication"

Psychologists - "manage"

Marriage and Family Therapists - "mental"

Psychiatric Nurses - "families"

Now, find the two letters that appear in EACH decoded word and write them in alphabetical order. Did you get it? "A" and "M" - the word is "am."

Please note that on the Field Notes workbook **page 6** - the Challenge "answer" for Mental Health Professionals Team is 2nd in the column, though this is our 4th activity. When you write the word for this challenge on the Code Solution area on **page 6**, please remember that the challenge words are slightly out of order on this page and to write it in the row that says, "CHALLENGE: Mental Health Professionals Team."

Take a moment to reflect on this experience using the Table of Featured Health Care Roles in your Field Notes Journal. **[3 MINUTE PAUSE]**

MENTAL HEALTH CASE SCENARIOS

Classroom Setup: Organize desks into groups of 6

Materials Required: Every group of 6 will need:

- Set of 6 Case Scenarios (focused on 6 different character names)

Let's move on to another activity focused on mental health and mental health careers. In this exercise, you will practice noticing signs and symptoms of mental health challenges, identify professionals who can help, coping strategies, and actions you can take to support someone navigating a mental health challenge. Work in teams of 2, and each team will take 2 of the scenarios.

As a pair, read the first case together. Then use the table in your Field Notes workbook on **page 17** to discuss the questions and complete each section.

The first section is about signs and symptoms of the mental health challenge your read, the next is giving ideas for “Your Role,” “Professional Support,” and “Self-Help and Other Support.” Look at the Info Sheets on **pages 18-20** for reference.

Once you are done with the first, move on to the 2nd scenario your pair took and work through the same questions.

(6 MINUTE Activity)

Take the next two minutes to reflect on this experience using the Table of Featured Health Care Roles in your Field Notes Journal.

EMERGENCY RESPONSE: ACTIVITY FOCUS – TAKING RISKS

Classroom Setup: Choice of maintaining groups of 6 or move to theater style seating facing the front of the room

Materials Required:

- 1 set of Emergency Response Simulation Cards (24 cards in the set)
- Distribute cards randomly to 24 students in the classroom

In our final Challenge, we will try to beat the clock and complete an Emergency Response Simulation before time runs out. Emergency Response is about WAY more people than just the ambulance team. Together we’ll work as a single classroom to complete the activity. When you hear your job title called by another player, stand to read your card (loud and clear for others to hear!) and advance the story, then sit back down in your seat.

If you have the “patient” card, you will begin the simulation as soon as I say “go.” Patient, give me a wave so I know you are ready! **[WAIT UNTIL YOU SEE STUDENT WAVE]** The timer is set for 7 minutes. Let’s see if we can beat it. Go!

USE SIMULATION ANSWER KEY BELOW TO PROMPT STUDENTS WHEN THEY GET STUCK.

[IF STUDENTS BEAT THE TIMER] Wow! Wonderful job. It takes hundreds of professionals to care for a patient in an emergency response situation.

[IF STUDENTS DID NOT BEAT THE TIMER] Whew! That was a great first attempt at an emergency response. Emergency Response professionals undergo intense training so they can perform well in difficult time constraints. It takes hundreds of professionals to care for a patient in an emergency response situation.

Let’s move onto **page 21** to find the last clue. Fill in the missing words in the sentence at the bottom of **page 21** to find the last clue. What did you get?

[IF THEY GOT "OF CARE"] Yes! Write that code on the Challenge 5 line on the Code Solution Sheet on **page 5!**

[IF THEY DID NOT GET "OF CARE"] Double check your work.

HEALTH CARE IN MY FUTURE REFLECTION

Take a moment to look through all of the clues you have collected on page 6. What is the final phrase for our Challenge Activity?

(GIVE 2 MINUTES)

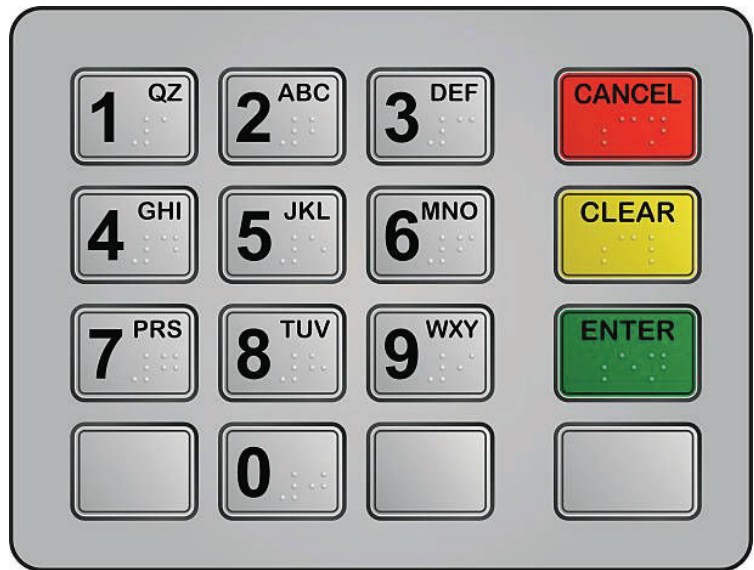
[IF THEY GOT "I AM THE FUTURE OF CARE"] Yes! You ARE the future of our health care system!

[IF THEY DID NOT GET "I AM THE FUTURE OF CARE"] Double check your work. You should end up with a sentence that affirms your future as an important member of the health care field.

Take a moment to reflect on this experience using the Table of Featured Health Care Roles in your Field Notes Journal. What have you learned? So what is the significance of this learning? Now what will you do with this learning? Starting on **page 22** there are additional reflection activities you can do now or reflect with later.

CAREERS IN HEALTHCARE INTRODUCTION AND CHALLENGE CODE SOLUTION

The very first step toward an amazing career in healthcare is just outside of your classroom door! As you participate in each challenge, be sure to look at the focus and decipher the code. Use the clues to discover the Challenge Code as you learn more about a rewarding healthcare career!



CODE

CHALLENGE: Surgical Team	I _
CHALLENGE: Mental Health Professionals Team	AM _ _
CHALLENGE: Nursing Careers	THE _ _ _
CHALLENGE: Allied Health Roles & Technicians	FUTURE _ _ _ _ _
CHALLENGE: Emergency Response Team	OF CARE _ _ _ _ _

Write the five words on the lines below to discover the Challenge Code phrase!

I AM THE FUTURE OF CARE
_ _ _ _ _

SURGICAL TEAM: ACTIVITY FOCUS - COMMUNICATION



The surgical team is made up of myriad of different healthcare professionals! Their roles require a high level of teamwork and communication in order to achieve the best results for their patients.

How to earn the code from this team:

In small groups, choose a card to assume a surgical team member's role. Work together and communicate to stack the cups in the pattern shown on the right using ONLY the tools provided to you. Each group member must operate one string. When your role's numbered cup is placed, share the job title and job description from your role card with the group. Tell one interest or skill that you have which might be beneficial to this role.



CHALLENGE CODE

What letter is 9th in job 1, 7th in job 2, and 4th in Job 6 ? Write it on the line below!

|

MENTAL HEALTH ROLES: ACTIVITY FOCUS – COLLABORATION AND PROBLEM SOLVING



The Mental Health Team is made up of Psychiatrists, Psychologists, Marriage and Family Therapists, Social Workers and a number of other roles. These professionals often have to decode the words and actions of their patients in order to determine how to meet their needs.

How to earn the code from this team:

Use the Morse code to decode each job description on the next page.

Morse Code "Key"

A ● -	J ● - - -	S ● ● ●
B - ● ● ●	K - ● -	T -
C - ● - ●	L ● - ● ●	U ● ● -
D - ● ●	M - -	V ● ● ● -
E ●	N - ●	W ● - -
F ● ● - ●	O - - -	X - ● ● -
G - - ●	P ● - - ●	Y - ● - -
H ● ● ● ●	Q - - ● -	Z - - ● ●
I ● ●	R ● - ●	

CHALLENGE CODE

Find the two letters that appear in EACH decoded word. Write these letters in alphabetical order on the lines below.

A M

ALLIED HEALTH ROLES: ACTIVITY FOCUS - CAREER EXPLORATION



Allied Health Roles & Technicians include a HUGE number of careers. Professions that are often listed as “allied health” include many of the well-known non-nurse, non-physician health care providers including audiologists and speech language Pathologists; Physical Therapists, Occupational Therapists and Respiratory Therapists; Diagnostic Medical Personnel, Imaging Specialists, Nutritionists and Dietitians, and Physician Assistants. A healthcare technician is an allied health professional who provides direct care to patients with or without the supervision of registered nurses. They are skilled personnel who work in a specialized area within the healthcare industry.

How to earn the code from this team:

Use the next pages to guide you through experiencing a task that a sample of these healthcare professionals might do in their career.

CHALLENGE CODE

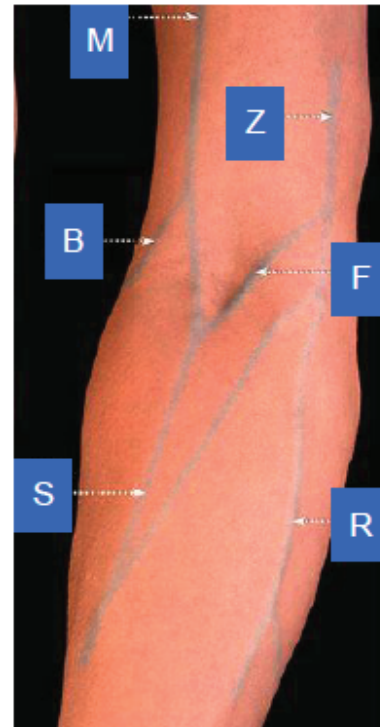
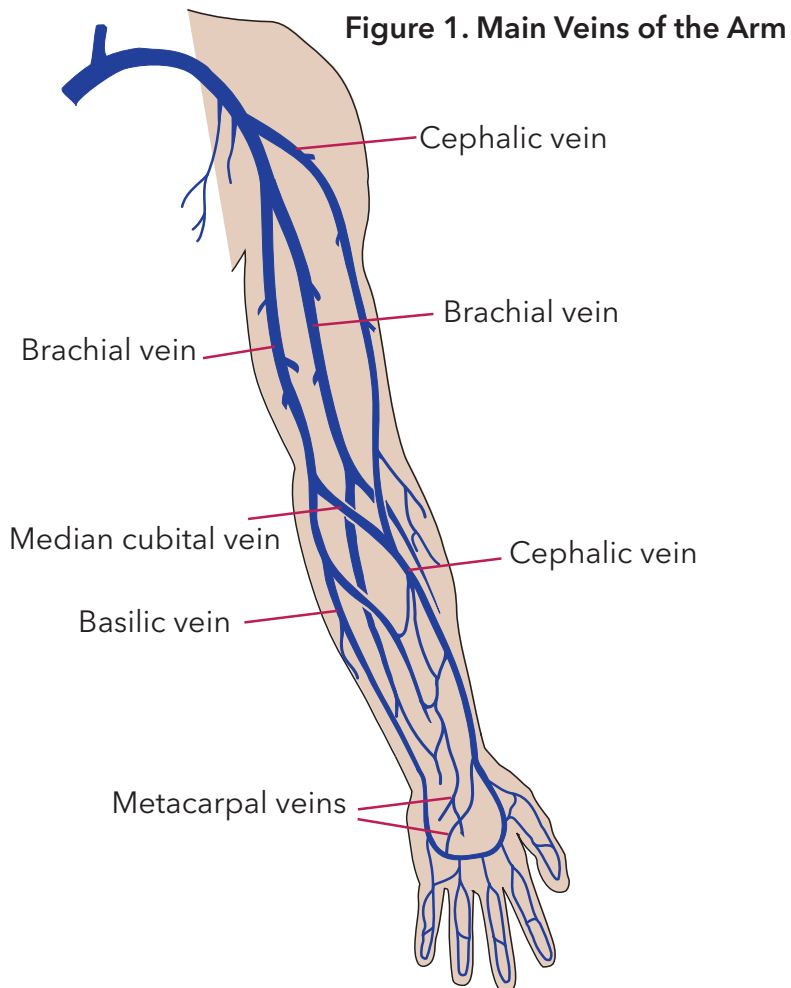
Collect the letters from the Phlebotomist, X-Ray, Ultrasound, Mammography, & Nuclear Medicine Technicians, Medical Assistant, and Obstetric Technician Experiences. Write them in that order on the lines below!

FUTURE

PHLEBOTOMISTS

Phlebotomists take samples of blood for testing. The blood samples may be needed to learn more about a particular patient, or they may be used in research. Phlebotomists also collect blood from donors for those in need of blood transfusions. Phlebotomists need a high school diploma and may need a license or certificate.

Use **Figure 1. Main Veins of the Arm** to figure out which number the phlebotomist should insert the needle into in order to draw blood from the median cubital vein. Write the letter on the line below!



Which letter shows the correct placement for the needle in the median cubital vein?

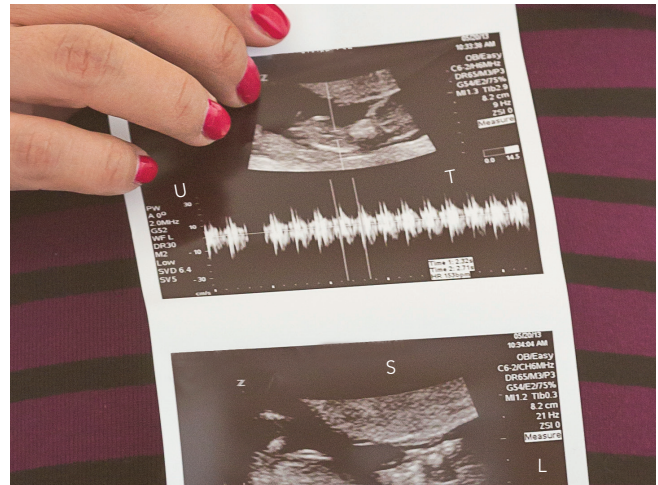
F

X-RAY, ULTRASOUND, MAMMOGRAPHY, & NUCLEAR MEDICINE TECHNICIANS

These technicians all use technology to “see” inside the body. Their images help physicians diagnose and treat patients. These roles require a minimum of an Associate’s Degree (2 years) and often require a Bachelor’s Degree (4 years).



X-Ray techs specialize in using **electromagnetic waves** to create digital diagnostic images of the inside of the body.



Ultrasound techs are specialists in using **high-frequency sound waves** to capture live images from inside the body.



Mammography techs are specialists in creating **x-rays** that allow doctors to view changes in breast tissue.



Nuclear medicine techs are specialists in using small amounts of **radioactive material** to create pictures of organs and tissues in the body.

What two letters can be found in EACH image?

U

T

MEDICAL ASSISTANT

Medical Assistants take medical histories and record vital signs of patients. Medical Assistants complete administrative and clinical tasks in the offices of physicians, hospitals, and other healthcare facilities. Their duties vary with the location, specialty, and size of the practice. Medical Assistants need a high school degree and often a certificate of completion.

Put the medical record cards in alphabetical order by patient's last name.

1. **Abalama**
2. **Baker**
3. **Blackwell**
4. **David**
5. **DiMartino**
6. **Lama**
7. **Lapointe**
8. **Lipovski**
9. **Mathews**
10. **Ramirez**

What letter is written in red on the fifth record? **U**

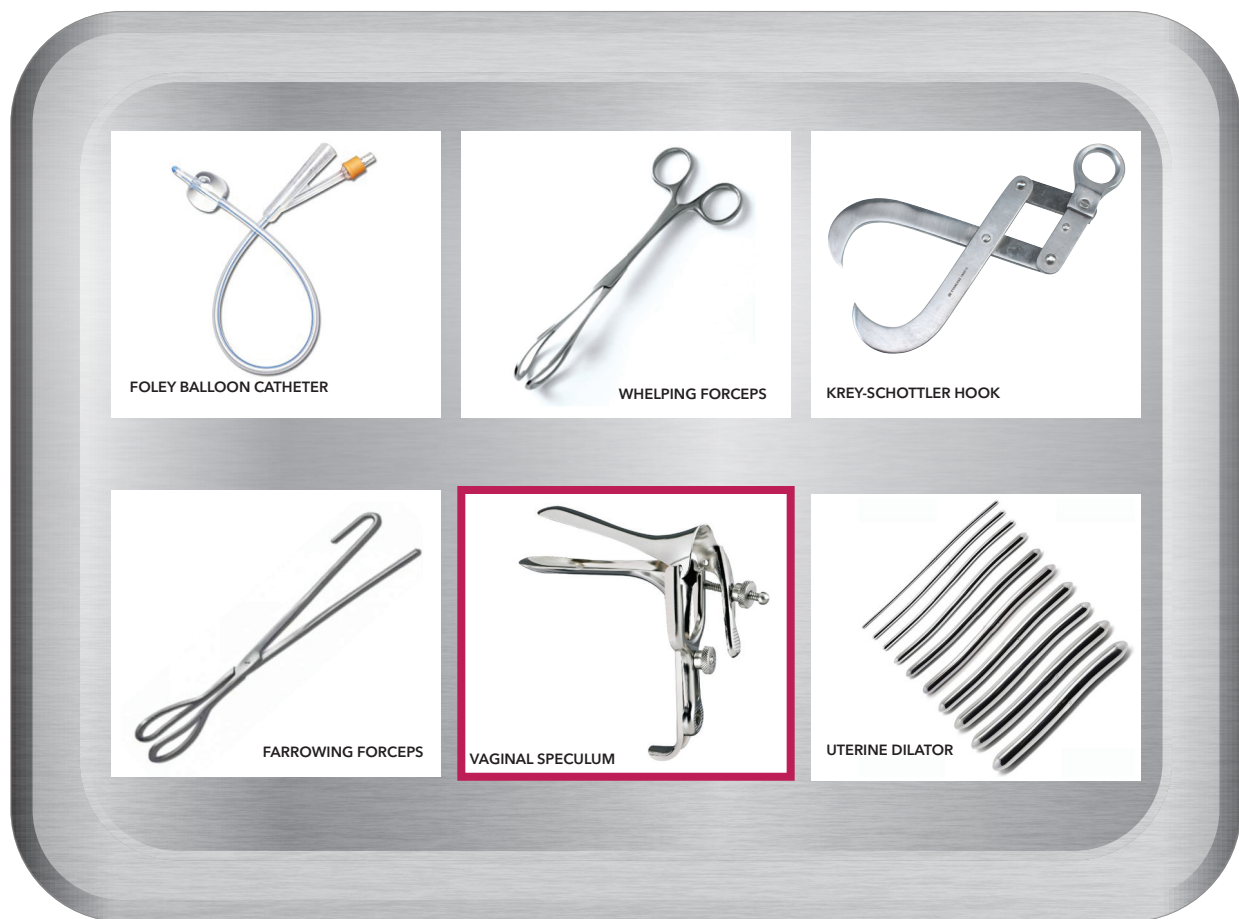
What letter is written in blue on the eighth record? **R**

OBSTETRIC TECHNICIAN

Obstetric technicians provide assistance during deliveries, sterilizing equipment, keeping records and examining patients. They ensure cleanliness and efficiency in labor and delivery units by keeping rooms prepared and monitoring patient health. Obstetric techs need an Associate's degree.

Put the obstetric tools in order on the tray so they are prepped for a procedure. Use the clues to place them correctly:

- The Foley balloon catheter, vaginal speculum, and Krey-Schottler hook are NOT in positions B, D, or F.
- The farrowing forceps are under the cervical dilator.
- The uterine dilator borders the Krey-Schottler hook and vaginal speculum.
- The vaginal speculum is to the left of the uterine dilator. It sits under forceps.
- The whelping forceps are in position B. They open toward the cervical dilator.



What position is the speculum in? **E** _____

NURSING CAREERS: ACTIVITY FOCUS - CAREER EXPLORATION



What surprises you about nursing careers?	What do you still wonder about nursing?	What specialty (or specialties) do you see yourself in?

DISCUSSION QUESTIONS

CHALLENGE CODE

What specialty could you see yourself in?

What surprises you about nursing careers?	What do you still wonder about nursing?	What specialty (or specialties) do you see yourself in?

CHALLENGE CODE

What three letter word can you make from E, T and H?

THE

MENTAL HEALTH CAREERS

Social Workers help people cope with challenges in every stage of their lives. They help with a wide range of situations, such as adopting a child or being diagnosed with a chronic illness. Social workers work with many populations, including children, people with disabilities, and people with addictions.

Requirements: Masters Degree

TERMINAL

Psychiatrists diagnose, treat, and prevent mental, emotional, and behavioral disorders with the use of medication, neuromodulation, and psychotherapy.

Requirements: Medical School Degree

MEDICATION

Psychologists help people cope with stressful situations, overcome addictions, and manage chronic illnesses. They can diagnose conditions and find out how people feel using assessments and tests.

Requirements: Doctoral Degree, PsyD or PhD

MANAGE

Marriage and Family Therapists assess, diagnose and treat mental illness and psychological distress within the context of the marriage and family systems. They may provide premarital counseling, relationship counseling, child counseling, and separation and divorce counseling.

Requirements: Masters Degree

MENTAL

Psychiatric Nurses are registered nurses with specialized training. They help assess and monitor mental health and behavioral conditions. Psychiatric nurses work with individual patients, groups, or even communities.

Requirements: RN License and Specific Certification

FAMILIES

EMERGENCY RESPONSE: ACTIVITY FOCUS – TAKING RISKS



Emergency Response involves hundreds of different careers working together. In addition to the Coctors, Nurses, Allied Health roles, and staff within the hospital, there are also many careers that deal with the crisis or circumstance that brings that patient in for care. In our simulation, we encountered some roles that might interact with a cardiac patient’s diagnosis and recovery.

There are many roles we did not experience in this simulation. A few of these include:

- Hospital Housekeepers sanitize and clean environments in a hospital. They make it possible for huge numbers of patients to be cared for safely by making beds, changing linens, cleaning floors, vacuuming carpets, restocking medical supplies, using disinfectants, and applying infection-control policies.
- Forensic Investigators/Forensic Examiners provide analysis of biological evidence that help law enforcement investigate crimes.
- The Medical Examiner’s Office includes Doctors, Autopsy Technicians, Coroners, and others who examine bodies postmortem to determine the cause of death and circumstances surrounding the death of an individual.
- IT Staff maintain and train staff on critical technology for hospitals, clinics, and other medical facilities.
- Biomedical Technicians repair and update equipment like pumps and monitors.

CHALLENGE CODE

It takes hundreds **OF** professionals to **CARE** for a patient in a medical emergency.

SIMULATION ANSWER KEY:

1. **Patient** is experiencing chest pain and calls 911. The 911 dispatcher answers.
2. The **911 dispatcher** asks for information from the patient. What is their complaint? When did it start? Are there any associated symptoms like shortness of breath? Where are they located? The dispatcher also makes sure to ask if the patient is home alone and if the front door is unlocked if the patient isn't able to move. The dispatcher activates the Emergency Medical System, or EMS. The EMS can include police or firefighters depending on the emergency. Since our patient is experiencing chest pains, the dispatcher alerts an Emergency Medical Technicians, or EMTs.
3. **Emergency Medical Technicians**, or EMTs, care for patients at the scene of an incident and while taking patients by ambulance to a hospital. They are trained in administering basic medical care and CPR. Many firefighters are also EMTs and can begin care if they are first on scene. In addition to the EMT, the dispatcher also alerts Paramedics.
4. **Paramedics** are advanced emergency medical care providers. They have advanced life skills and can administer more medications as needed. Some firefighters are also trained Paramedics. The paramedic will start an IV, take vital signs, and perform an EKG. This traces the heart to see if the patient is having a heart attack. If the patient's EKG is concerning, the paramedic can activate the necessary specialists at the hospital right from the ambulance. These first responders are brought to the scene of the emergency by an Ambulance Technician.
5. **Ambulance Technicians**, or drivers, are usually qualified as an ambulance care assistant, patient transport service driver, emergency care assistant, ambulance technician or paramedic. They provide some level of emergency care in addition to transporting the patient and Emergency Response Team to the hospital. The Ambulance Technician helps the team get the patient onto a stretcher and monitor, then contacts the Emergency Department to let them know they are on their way. When they arrive at the ER, one of the first people the team sees is the Registration Clerk.
6. The **Registration Clerk** will get the patient logged into the computer system so orders can be placed. They will input their insurance information, emergency contact information, and other basic information so all medical team members can access it easily. The first medical team member to access this record and interact with the patient is usually a Triage Nurse.
7. The **Triage Nurse** evaluates the patient's condition, as well as any changes, and will determine their priority for admission to the emergency department and also for treatment. The triage nurse is responsible for working with patients and families in the waiting room, performing emergency treatment when necessary, and communicating course of action with families. The triage nurse may assign the patient to a Certified Nursing Assistant, or CNA.
8. An Emergency Room **Certified Nursing Assistant, or CNA** takes non-critical patients into rooms, taking patients to get changed, monitoring their vital signs, and recording notes about vital signs and other concerns. They may also prepare patients for X-rays or bring them a blanket to keep them warm. The CNA may be assisted by an Emergency Room Technician.

9. **Emergency Room Technicians** perform basic, but critical, tasks such as drawing blood, setting up all the tech in the emergency room and preparing patients for operation. Since the patient's heart is being monitored closely, they will bring in an EKG Technician.
10. The **EKG Technician, or Electrocardiograph Tech**, operates equipment that measures, monitors, and graphically traces the electrical activity of the heart. Physicians use the graph to diagnose and monitor patients' heart problems. If the EKG is consistent with a heart attack the Interventional Cardiologist will be notified.
11. An **Interventional Cardiologist** is a heart doctor who specializes in treating cardiovascular disease and who have had one to two years of education and training specifically in the use of catheters to perform cardiovascular procedures. The Interventional Cardiologist will request a cardiac catheterization to assess blockages. This is done by the Cath Lab Tech.
12. A **Cath Lab Tech, or Catheterization Laboratory Technician**, specializes in using imaging equipment to see the arteries and check how well blood is flowing to and from the heart. This information helps the care team to diagnose and treat blockages and other problems in the arteries. Additional care will be provided by the Cath Lab Nurse.
13. A **Cath Lab Nurse** monitors the patient's condition to identify changes that may need immediate attention, watches the cath lab monitors that display heart rhythm and rate, and notify the physician if they observe changes. If the patient is also having respiratory symptoms, a Respiratory Therapist will also come to assist.
14. The **Respiratory Therapist** is trained and skilled to assess, diagnose, and treat patients who have difficulty breathing. They work with people of all ages, from infants to the elderly. They will come up with treatment plans aimed at restoring natural breathing function and communicate these with the Emergency Room Physician.
15. The **Emergency Room Physician** treats any injuries, infections, or other conditions to stabilize patients in the ER. They request medical tests for patients, create treatment plans, and recommend patients to appropriate specialists. The patient's chest pains might lead the ER Physician to order a chest X Ray and wait for guidance from the Radiologist.
16. The **Radiologist** is a medical doctor that specializes in diagnosing and treating injuries and diseases using medical imaging like X-rays, computed tomography (CT), magnetic resonance imaging (MRI), nuclear medicine, positron emission tomography (PET) and ultrasound. This doctor would report their findings back to the team. The team may request bloodwork be examined by a medical laboratory technician.
17. The **Medical Laboratory Technician, or Lab Tech**, is a trained healthcare professional who collects medical samples and performs tests. They analyze body fluids, study blood samples, and share the results of the tests with the patient's medical team. The medical team may use this analysis to determine additional medications the patient needs. Medication requests go through the pharmacist.

18. The **Pharmacist** consults on the patient's diagnosis, examines patient charts, conducts patient evaluations to recommend a course of treatment, and chooses the appropriate dosing of medications and evaluates their effectiveness. To ensure that the hospital is properly stocked on must-have medications, a pharmacist must work with pharmaceutical wholesale distributors to purchase the proper medications in the proper amount. They often have help from a pharmacist assistant.
19. A **Pharmacist Assistant** mixes and dispenses prescribed drugs based on the medical team's instructions. They consult with medical staff about potential drug interactions, patient medical history, and the use of particular medications. This includes communicating with the patient's Nurse Practitioner.
20. The **Nurse Practitioner** is trained to assess, diagnose, order, and interpret medical tests, prescribe medications, and collaborate in the care of patients. They educate patients and families on disease prevention and positive health and lifestyle choices. The Nurse practitioner updates charts and gives these to the unit secretary.
21. A **Unit Secretary** is an administrative position that assists in supporting patients and medical staff by answering incoming calls, organizing charts and admitting new patients. The unit secretary also makes sure that everyone is contacted and everything moves quickly. They do this by working closely with the Charge Nurse.
22. **Charge Nurses** care for patients, but they also ensure that everything is going smoothly during a shift. They coordinate between the staff nurses and physicians or hospital administrators. These nurses delegate tasks, prepare schedules, and monitor admissions and discharges. They check in with the Medical Supply Technician to request supplies.
23. **Medical Supply Technicians** clean, package, assemble, sterilize, and distribute supply items used for patient care in the hospital. They make sure all equipment and supplies are stocked so each of the specialists, nurses, doctors, and techs working to help the patient have all of the tools they need. Sometimes these tools are things a patient needs to continue their recovery at home. This is dealt with through the Discharge Planner.
24. A **Discharger Planner** is responsible for making sure patients are released from the hospital to the proper environment that can best care for them as they recuperate. This might include making appointments or recommendations for a wealth of different specialists, doctors, or therapists that the patient might need for continued care after they leave the hospital. It might also include meetings with the Chaplain team to support the patient's spiritual needs or with a Social Worker who makes sure the patient is returning to a safe, healing environment.