

# FIELD NOTES

Future Health Care Professional's Name: \_\_\_\_\_

School: \_\_\_\_\_



# TABLE OF CONTENTS

Welcome Letter .....	2
Initial Reflection .....	3
Table of Featured Health Care Careers .....	4
Careers in Health Care Introduction and Challenge Code Solution .....	6
Surgical Team: Activity Focus - Communication .....	7
Allied Health Roles: Activity Focus - Career Exploration .....	8
Nursing Careers: Activity Focus - Career Exploration .....	13
Mental Health Roles: Activity Focus - Collaboration and Problem Solving .....	15
Mental Health Case Scenario: Group Discussion Worksheet .....	17
Mental Health Info Sheets .....	18
Emergency Response: Activity Focus - Taking Risks .....	21
Reflection of Activities: What, So What, Now What .....	22
Health Care Professions In My Future .....	23
Backmapping MY Future in the Health Care Profession .....	24
My Notes .....	25
Resources .....	27
List of Health Career Exposures Activities .....	27
Behavioral-Mental Health Related Certificates and Educational Degrees .....	30
Behavioral-Mental Health Jobs/Positions Related to Level of Education .....	31

# WELCOME

Dear Future Health Care Professional,

We are excited you are Exploring Careers in Health Care!

Our goal is to expose you to some of the careers that are available in health care, particularly those outside of the roles you may already be familiar with. There are many careers that make the health care system function. Using this Field Notes Journal, you will have the opportunity to learn about the roles, responsibilities, education levels, and settings of nearly 70 health care careers.

We encourage you to collect your questions, ideas, and notes here as you work through the journal. This will become an important resource as you consider your own strengths and interests as they relate to health care careers and make decisions about the steps you can take now to begin your path.

You ARE the future of care. We hope this experience inspires a rewarding health care career full of opportunities to put your interests and talents to work.

Be well,

The Exploring Careers in Health Care Team

# INITIAL REFLECTION:

What does "health care" make you think of? \_\_\_\_\_

---

---

---

---

---

---

---

What jobs do you already know about in the health care field? \_\_\_\_\_

---

---

---

---

---

---

---

What questions do you have about health care careers? \_\_\_\_\_

---

---

---

---

---

---

---

# TABLE OF FEATURED HEALTH CARE CAREERS

Health Care Career	What do they do?	What traits, skills, or interests do I have that link to this career?

# TABLE OF FEATURED HEALTH CARE CAREERS

Health Care Career	What do they do?	What traits, skills, or interests do I have that link to this career?

# CAREERS IN HEALTH CARE INTRODUCTION AND CHALLENGE CODE SOLUTION

The very first step toward an amazing career in health care is just outside of your classroom door! As you participate in each challenge, be sure to look at the focus and decipher the code. Use the clues to discover the Challenge Code as you learn more about a rewarding career!

Note! The order of the Challenge codes below is different from the order of the exercises in the journal. Make sure to write your codes on the line next to the corresponding Challenge exercise.



	CODE
CHALLENGE: Surgical Team	—
CHALLENGE: Mental Health Professionals Team	— —
CHALLENGE: Nursing Careers	— — —
CHALLENGE: Allied Health Roles	— — — — —
CHALLENGE: Emergency Response Team	— — — — —

Write the five words on the lines below to discover the Challenge Code phrase!

— — — — —

# SURGICAL TEAM: ACTIVITY FOCUS – COMMUNICATION



The surgical team is made up of a myriad of different health care professionals! Their roles require a high level of teamwork and communication in order to achieve the best results for their patients.

## How to earn the code from this team:

In small groups, choose a card to assume a surgical team member's role. Work together and communicate to stack the cups in the pattern shown on the right using ONLY the tools provided to you. Each group member must operate one string. When your role's numbered cup is placed, share aloud to the group the job title and job description from your role card with the corresponding cup number. Tell one interest or skill that you have which might be beneficial to this role.



## CHALLENGE CODE

What letter is 9th in job 1, 7th in job 2, and 4th in Job 6 ? Write it on the line below!



# ALLIED HEALTH ROLES: ACTIVITY FOCUS - CAREER EXPLORATION



Allied Health Roles & Technicians include a HUGE number of careers. Professions that are often listed as “allied health” include many of the well-known non-nurse, non-physician health care providers including audiologists and speech language Pathologists; Physical Therapists, Occupational Therapists and Respiratory Therapists; Diagnostic Medical Personnel, Imaging Specialists, Nutritionists and Dietitians, and Physician Assistants. A health care technician is an allied health professional who provides direct care to patients with or without the supervision of registered nurses. They are skilled personnel who work in a specialized area within the health care industry.

## **How to earn the code from this team:**

Use the next pages to guide you through experiencing a task that a sample of these health care professionals might do in their career.

## **CHALLENGE CODE**

Collect the letters from the Phlebotomist, X-Ray, Ultrasound, Mammography, & Nuclear Medicine Technicians, Medical Assistant, and Obstetric Technician Experiences. Write them in that order on the lines below!

---

---

---

---

---

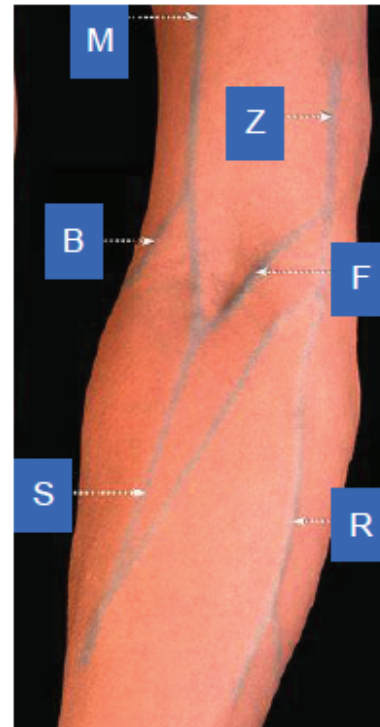
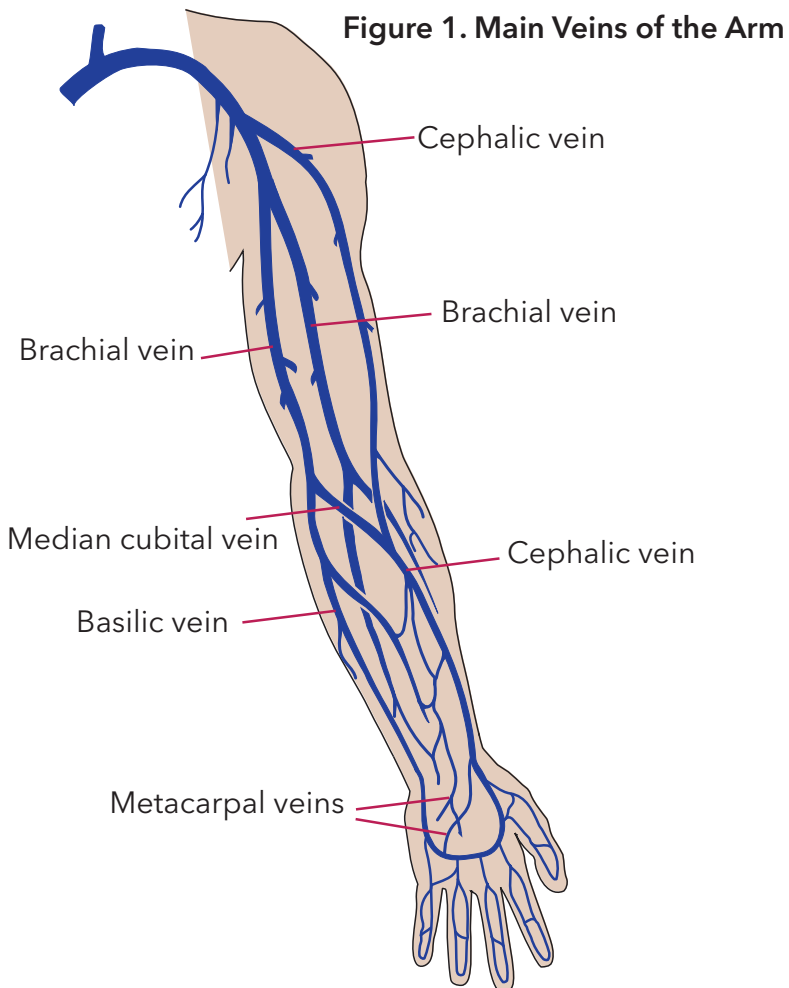
---

---

# PHLEBOTOMISTS

Phlebotomists take samples of blood for testing. The blood samples may be needed to learn more about a particular patient, or they may be used in research. Phlebotomists also collect blood from donors for those in need of blood transfusions. Phlebotomists need a high school diploma and may need a license or certificate.

Use **Figure 1. Main Veins of the Arm** to figure out which number the phlebotomist should insert the needle into in order to draw blood from the median cubital vein. Write the letter on the line below!



Which letter shows the correct placement for the needle in the median cubital vein?

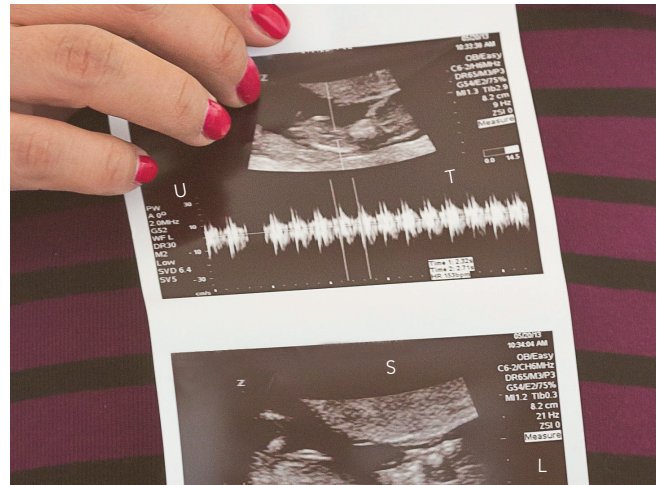
\_\_\_\_\_

# X-RAY, ULTRASOUND, MAMMOGRAPHY, & NUCLEAR MEDICINE TECHNICIANS

These technicians all use technology to “see” inside the body. Their images help physicians diagnose and treat patients. These roles require a minimum of an Associate’s Degree (2 years) and often require a Bachelor’s Degree (4 years).



X-Ray techs specialize in using **electromagnetic waves** to create digital diagnostic images of the inside of the body.



Ultrasound techs are specialists in using **high-frequency sound waves** to capture live images from inside the body.



Mammography techs are specialists in creating **x-rays** that allow doctors to view changes in breast tissue.



Nuclear medicine techs are specialists in using small amounts of **radioactive material** to create pictures of organs and tissues in the body.

What two letters can be found in EACH image?

\_\_\_\_\_

# MEDICAL ASSISTANT

Medical Assistants take medical histories and record vital signs of patients. Medical Assistants complete administrative and clinical tasks in the offices of physicians, hospitals, and other health care facilities. Their duties vary with the location, specialty, and size of the practice. Medical Assistants need a high school degree and often a certificate of completion.

Put the medical record cards in alphabetical order by patient's last name.

1. \_\_\_\_\_
2. \_\_\_\_\_
3. \_\_\_\_\_
4. \_\_\_\_\_
5. \_\_\_\_\_
6. \_\_\_\_\_
7. \_\_\_\_\_
8. \_\_\_\_\_
9. \_\_\_\_\_
10. \_\_\_\_\_

What letter is written in red on the fifth record? \_\_\_\_\_

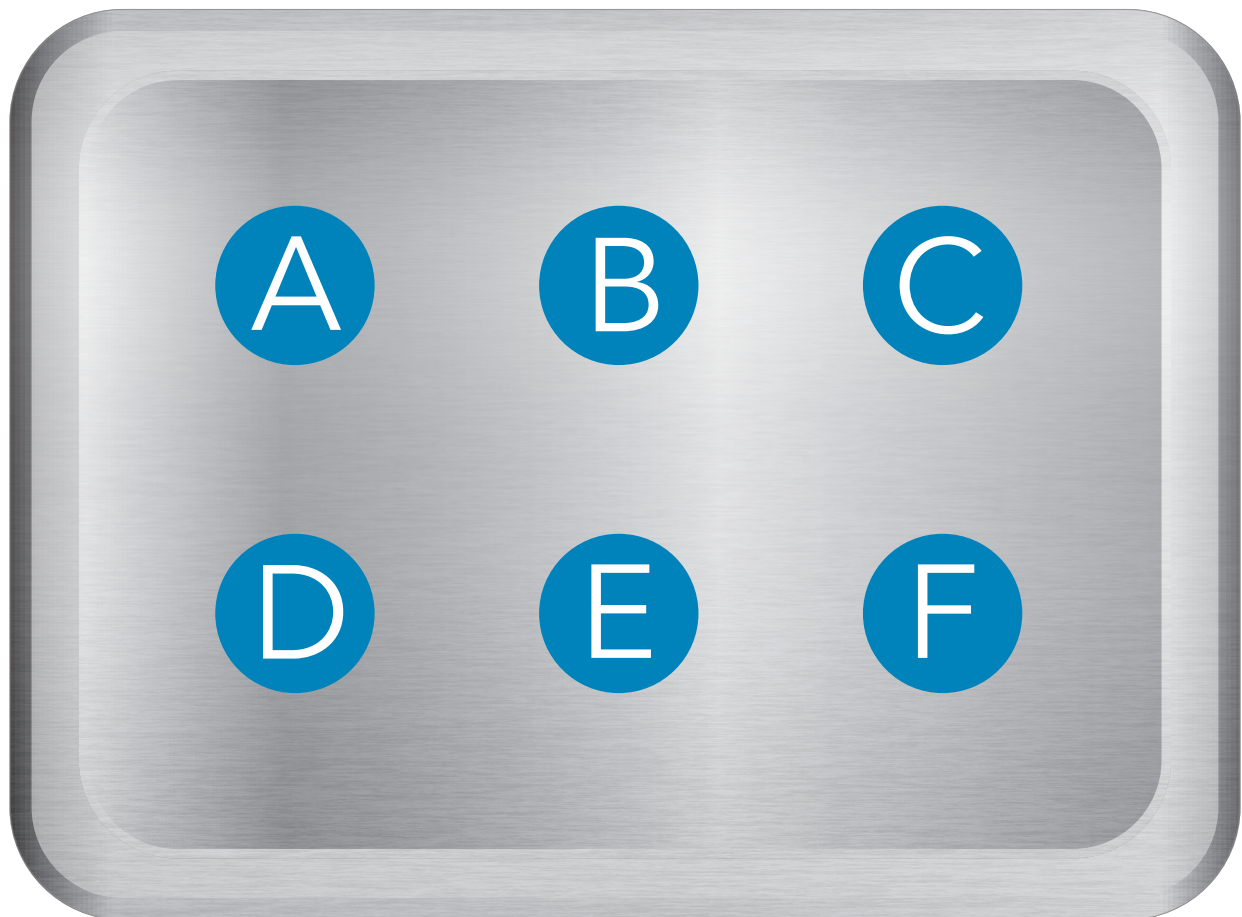
What letter is written in blue on the eighth record? \_\_\_\_\_

# OBSTETRIC TECHNICIAN

Obstetric technicians provide assistance during deliveries, sterilizing equipment, keeping records and examining patients. They ensure cleanliness and efficiency in labor and delivery units by keeping rooms prepared and monitoring patient health. Obstetric techs need an Associate's Degree (2 years).

Put the obstetric tools in order on the tray so they are prepped for a procedure. Use the clues to place them correctly:

- The Foley balloon catheter, vaginal speculum, and Krey-Schottler hook are NOT in positions B, D, or F.
- The farrowing forceps are under the cervical dilator.
- The uterine dilator borders the Krey-Schottler hook and vaginal speculum.
- The vaginal speculum is to the left of the uterine dilator. It sits under forceps.
- The whelping forceps are in position B. They open toward the cervical dilator.



What position is the speculum in? \_\_\_\_\_

# NURSING CAREERS: ACTIVITY FOCUS - CAREER EXPLORATION



What surprises you about nursing careers?	What do you still wonder about nursing?	What specialty (or specialties) do you see yourself in?

What surprises you about nursing careers?	What do you still wonder about nursing?	What specialty (or specialties) do you see yourself in?

**CHALLENGE CODE**

What three letter word can you make from E, T and H?

---

# MENTAL HEALTH ROLES: ACTIVITY FOCUS – COLLABORATION AND PROBLEM SOLVING



The Mental Health Team is made up of Psychiatrists, Psychologists, Marriage and Family Therapists, Social Workers and a number of other roles. These professionals often have to decode the words and actions of their patients in order to determine how to meet their needs.

## How to earn the code from this team:

Use the Morse code to decode each job description on the next page.

### Morse Code "Key"

A ● -	J ● - - -	S ● ● ●
B - ● ● ●	K - ● -	T -
C - - ● ●	L ● - ● ●	U ● ● -
D - ● ●	M - -	V ● ● ● -
E ●	N - ●	W ● - -
F ● ● - ●	O - - -	X - ● ● -
G - - ●	P ● - - ●	Y - ● - -
H ● ● ● ●	Q - - ● -	Z - - ● ●
I ● ●	R ● - ●	

## CHALLENGE CODE

Find the two letters that appear in EACH decoded word. Write these letters in alphabetical order on the lines below.

---



# MENTAL HEALTH CAREERS

**Social Workers** help people cope with challenges in every stage of their lives. They help with a wide range of situations, such as adopting a child or being diagnosed with a chronic illness. Social workers work with many populations, including children, people with disabilities, and people with addictions.

**Requirements:** Master's Degree

**Psychiatrists** diagnose, treat, and prevent mental, emotional, and behavioral disorders with the use of medication, neuromodulation, and psychotherapy.

**Requirements:** Medical School Degree

**Psychologists** help people cope with stressful situations, overcome addictions, and manage chronic illnesses. They can diagnose conditions and find out how people feel using assessments and tests.

**Requirements:** Doctoral Degree, PsyD or PhD

**Marriage and Family Therapists** assess, diagnose and treat mental illness and psychological distress within the context of the marriage and family systems. They may provide premarital counseling, relationship counseling, child counseling, and separation and divorce counseling.

**Requirements:** Masters Degree

**Psychiatric Nurses** are registered nurses with specialized training. They help assess and monitor mental health and behavioral conditions. Psychiatric nurses work with individual patients, groups, or even communities.

**Requirements:** RN License and Specific Certification

# MENTAL HEALTH CASE SCENARIO: GROUP DISCUSSION WORKSHEET

**Directions:** Consider your assigned case scenario, and working in small groups as instructed, complete the table below. Your goals are to spot the “red flags” and identify supports for your character’s mental health in each of the 3 categories.

**Key Details:** What signs and symptoms of a mental health challenge is the individual in your scenario experiencing?

--	--	--

YOUR ROLE	PROFESSIONAL SUPPORT	SELF-HELP / OTHER SUPPORT
Mini-Team 1: What could YOU say and do to support this person?	Mini-Team 2: Using the list provided, identify a mental health professional you would suggest for this person. Why?	Mini-Team 3: Using the list provided, identify some self-help / other support that might work for this person. Why?

**Bonus Question:** Which mental health profession from the list is most interesting to you? Why?

--	--	--

# INFO SHEET: MENTAL HEALTH PROFESSIONALS

**Mini-Team 2:** What kind(s) of mental health professionals would you suggest to the character in your group's case scenario?

<b>Community Health Worker</b> Requirement: CHW Certificate	<ul style="list-style-type: none"> <li>• Public health worker</li> <li>• Has a close understanding of the community served - like they grew up there or are unusually familiar with the culture</li> <li>• Acts as the link between social/health services and the community; can help identify community-based resources</li> </ul>
<b>Psychiatric Technician</b> Requirement: Psych Tech License	<ul style="list-style-type: none"> <li>• Frontline mental health employee in various health care settings</li> <li>• Provides hands-on care to people with mental illnesses and/or developmental disabilities</li> </ul>
<b>Alcohol &amp; Drug Counselor</b> Requirement: Substance Use Counselor Certificate	<ul style="list-style-type: none"> <li>• Also known as substance abuse counselors; focus on addiction</li> <li>• Works closely with clients to identify problem behaviors and offer solutions</li> <li>• Assists individuals in finding the right path to recovery</li> </ul>
<b>Peer Support Specialist</b> Requirement: Associate's or Bachelor's Degree in Psych or Sociology	<ul style="list-style-type: none"> <li>• Someone who has been successful in recovery from their own mental health or substance use disorder</li> <li>• Helps others who are experiencing a similar situation</li> </ul>
<b>Case Manager</b> Requirement: Associate's or Bachelor's Degree in Psych or Sociology	<ul style="list-style-type: none"> <li>• Social service workers who coordinate care for their clients</li> <li>• Performs intake interviews to gain understanding of a client's needs</li> <li>• Works with agencies and institutions connect clients to care/services</li> </ul>
<b>Therapeutic Behavioral Specialist</b> Requirement: Associate's or Bachelor's Degree in Psych or Sociology	<ul style="list-style-type: none"> <li>• Provides intensive, individualized, short-term outpatient treatment for youth up to age 21</li> <li>• Serves youth with serious emotional disturbances, mental health conditions interfering with daily functioning and youth experiencing stressful transitions or life crises</li> </ul>
<b>Registered Nurse - Psychiatric</b> Requirement: BS in Nursing	<ul style="list-style-type: none"> <li>• Cares for patients/clients receiving treatment for mental illnesses, addiction, eating disorders or substance abuse</li> <li>• Usually works in a hospital or clinic</li> </ul>
<b>Licensed Clinical Social Worker (LCSW)</b> Requirement: Master of Social Work	<ul style="list-style-type: none"> <li>• Works in a wide variety of settings to provide emotional support, mental health evaluations, therapy and case management services</li> <li>• Helps people experiencing psychological, emotional, medical, social and/or familial challenges</li> </ul>

# INFO SHEET: MENTAL HEALTH PROFESSIONALS

<p><b>Licensed Marriage &amp; Family Therapist (LMFT)</b> Requirement: Master of Science in Counseling</p>	<ul style="list-style-type: none"> <li>• Trained in psychotherapy and family systems</li> <li>• Able to diagnose and treat mental and emotional disorders individuals, couples and families</li> </ul>
<p><b>Board Certified Behavior Analyst (BCBA)</b> Requirement: Master of Science in Applied Behavior Analysis</p>	<ul style="list-style-type: none"> <li>• Certified in behavior analysis</li> <li>• Independent practitioners who analyze behavior</li> <li>• Can help someone to reduce unwanted behaviors and increase desired behaviors</li> </ul>
<p><b>Public Health Program Manager</b> Requirement: Master in Public Health</p>	<ul style="list-style-type: none"> <li>• Focused on the health of individuals, families and communities</li> <li>• Analyzes and develop health care programs with the goal of reaching as many people as possible</li> <li>• Administers programs that teach healthy lifestyle habits and prevention of disease and illness</li> </ul>
<p><b>Licensed Clinical Psychologist</b> Requirement: Doctor of Psychology</p>	<ul style="list-style-type: none"> <li>• Works in a wide variety of settings to help people learn to cope with stressful situations, overcome addictions, and manage chronic illnesses</li> <li>• Provides tests and assessments that can help diagnose a condition or tell more about the way a person thinks, feels, and behaves</li> </ul>
<p><b>Psychiatric-Mental Health Nurse Practitioner</b> Requirement: Doctorate in Nursing Practice</p>	<ul style="list-style-type: none"> <li>• Provides comprehensive mental health care to patients navigating behavioral challenges and mental health disorders</li> <li>• Provides diagnostic care and treatment</li> <li>• Focuses on psychiatric/mental health maintenance and wellness using medicine and therapy</li> </ul>
<p><b>Psychiatrist</b> Requirement: Medical Doctor with Psychiatric Residency</p>	<ul style="list-style-type: none"> <li>• Medical doctor (an M.D. or D.O.)</li> <li>• Specializes in mental health, including substance use disorders</li> <li>• Qualified to assess both the mental and physical aspects of psychological problems</li> <li>• Focused on the diagnosis, treatment and prevention of mental, emotional and behavioral disorders</li> <li>• Can prescribe medication</li> </ul>

# INFO SHEET: SELF-HELP AND OTHER SUPPORTS

**Mini-Team 3:** What kind(s) of self-help and other support strategies would you suggest to the character in your group's case scenario?

Strategy	What is it / How does it help?	Examples
<b>Exercise/ Physical Activity</b>	<ul style="list-style-type: none"> <li>Increases endorphins, or “feel-good” brain chemicals</li> <li>Can help us be present in the moment and focus on something other than our worries</li> </ul>	Dancing, walking, weightlifting, sports, rollerskating, play, yoga, stretching, etc.
<b>Relaxation, Meditation, or Mindfulness Practice</b>	<ul style="list-style-type: none"> <li>“Mindfulness” is being more aware of the present moment - instead of thinking about the future or the past</li> <li>Mindfulness practice can help people manage depression, anxiety, addiction, stress and even chronic health conditions</li> </ul>	Breathing, observation, awareness, listening, appreciation, focusing on specific senses, etc.
<b>Social Networks</b>	<ul style="list-style-type: none"> <li>Strong relationships and support systems can protect an individual experiencing mental health challenges</li> <li>People are more likely to seek help or treatment if someone close to them suggests it</li> <li>Social networks can help individuals navigating mental illness to feel less alone or isolated</li> </ul>	Friends, family, neighbors, clubs, church/religious/spiritual groups, work colleagues, associations, etc.
<b>Peer Support Groups</b>	<ul style="list-style-type: none"> <li>A regular gathering of a group of people with a similar lived experience or mental health diagnosis</li> <li>Usually facilitated by a peer support specialist or a professional</li> <li>Helps individuals feel less alone and stay in recovery, even when it is challenging</li> </ul>	Grief support groups, Alcoholics Anonymous, Alzheimer’s Association, Anxiety support groups, Parent support groups, etc.
<b>Self-Help Books/ Education</b>	<ul style="list-style-type: none"> <li>Resources to help someone learn more about a diagnosis or a mental health challenge they are navigating</li> <li>Can also be helpful for supporters/caregivers of the person navigating the challenge</li> <li>Teach strategies and actions to support recovery</li> </ul>	Books, articles, videos, resource guides, etc.
<b>Hobbies</b>	<ul style="list-style-type: none"> <li>Engaging in a preferred activity can help someone to experience joy and have something to look forward to</li> <li>Hobbies often connect individuals with other people who have similar interests</li> </ul>	Sports, knitting, puzzles, video games, reading, making art, hiking, etc.

# EMERGENCY RESPONSE: ACTIVITY FOCUS – TAKING RISKS



Emergency Response involves hundreds of different careers working together. In addition to the Doctors, Nurses, Allied Health roles, and staff within the hospital, there are also many careers that deal with the crisis or circumstance that brings that patient in for care. In our simulation, we encountered some roles that might interact with a cardiac patient’s diagnosis and recovery.

There are many roles we did not experience in this simulation. A few of these include:

- Hospital Housekeepers sanitize and clean environments in a hospital. They make it possible for huge numbers of patients to be cared for safely by making beds, changing linens, cleaning floors, vacuuming carpets, restocking medical supplies, using disinfectants, and applying infection-control policies.
- Forensic Investigators/Forensic Examiners provide analysis of biological evidence that help law enforcement investigate crimes.
- The Medical Examiner’s Office includes Doctors, Autopsy Technicians, Coroners, and others who examine bodies postmortem to determine the cause of death and circumstances surrounding the death of an individual.
- IT Staff maintain and train staff on critical technology for hospitals, clinics, and other medical facilities.
- Biomedical Technicians repair and update equipment like pumps and monitors.

## **CHALLENGE CODE: Complete the Sentence**

It takes hundreds \_\_\_\_\_ professionals to \_\_\_\_\_ for a patient in a medical emergency.

# REFLECTION OF ACTIVITIES: WHAT, SO WHAT, NOW WHAT

What have you learned?

So what is the significance  
of this learning?

Now what are you going to  
do with this learning?

# HEALTH CARE PROFESSIONS IN MY FUTURE

What job or jobs that we explored sounds most interesting to you?

---

---

---

What skills/interests do you currently have that might be used in these roles?

---

---

---

What skills/knowledge do you think you will need to develop for these roles?

---

---

---

What training, degree, or experiences might help you prepare for these roles?

---

---

---

What can you do now to begin your journey toward these roles?

---

---

---



# BACKMAPPING MY FUTURE IN A HEALTH CARE PROFESSION

Consider your answers to “Health Care Professions in MY Future.” Make a map to show how you will get there!

While I am in high school, I will...	
After graduation, I will...	
In 5 years, I will...	
In 10 years, I will...	





# LIST OF HEALTH CAREER EXPOSURES ACTIVITIES

The following listing are current or former partners of Kaiser Permanente Northern California that support students in gaining exposure opportunities to careers in the health care field. Please check out their websites to find more about their programs!

## **FACES for the Future Coalition**

Inspiring youth to lead by creating innovative approaches to youth development, health careers preparation, and wellness.

All FACES programs provide Four Core Components:

- **Health Career Training and Work-based Learning:** includes internships in hospitals, community clinics, mental and behavioral health agencies, public health departments and health-focused community-based organizations
- **Academic Support:** this can include tutoring, college application preparation and financial aid and scholarship application support
- **Wellness Services:** students are assessed for environmental stresses that may be negatively impacting the achievement of academic goals. They are then connected with outside resources when needed, including counseling, medical homes, housing and food resources. In addition, programs provide wellness trainings around such topics as mindfulness, healthy relationships and self-advocacy
- **Youth Leadership Development:** includes opportunities to provide peer health education, participate in public health conversations about issues impacting their communities, and being activated around health disparities

## **Health Career Connections**

HCC's program connects college students with internship opportunities through which they gain the necessary exposure, experience, and mentorship to discover and launch their authentic health careers. HCC offers an educational stipend, so the expense is not a barrier to participating in this opportunity as is often the case for underrepresented students. In addition, HCC connects participants with diverse role models, fosters community support, and provides specialized training to inspire and prepare program participants to become change agents in their organizations, communities, and our nation.

## **Helix Medical**

Helix is a California registered non-profit that hosts a free, four-week summer medical program for high school minority populations who are underrepresented in the medical field in the Bay Area. Through the Helix educational experience, students will learn about different fields of health, meet and network with local health care professionals, rotate through clinical and biological skills labs, and explore avenues for futures in health-oriented careers. Following the summer program, Helix alumni take part in unique semesterly workshops and are individually matched to a mentor in their health care field of interest. Ultimately, we hope to contribute towards a diverse health provider population that represents and advocates for the community it serves.

## **Mentoring in Medicine**

Each year Mentoring in Medicine & Science partners with health institutions all across the Bay Area to offer holistic and interactive programming to students of color interested in health. Whether we are exploring Stanford's School of Medicine or facilitating a hands-on workshop at Highland Hospital, we are proud to have such a strong network who support our mission to increase health workforce diversity.

## **Physicians Medical Forum**

(PMF's) main purpose is to encourage the recruitment and retention of African-American and unrepresented physicians, and the equity and betterment of health care for people in Northern California. They provide a variety of programs to support the next generation of physicians.

## **UCSF Fresno - Doctor's Academy**

### **Student Handbook - Doctors Academy Parent Student Handbook (DA)**

## **Futuro Health**

Futuro Health makes education journeys into allied health careers possible by growing the talent that employers need and creating a path to opportunity that workers want. Their goal is to graduate 10,000 allied health workers by 2024 to meet the nation's critical demand.

Website: [Futuro Health Supports Education Journeys Into Allied Health Careers - Futuro Health](#)

## **Kaiser Permanente Resources**

### **KP LAUNCH**

Kaiser Permanente's KP LAUNCH internship programs offer young adults paid internship opportunities in our Kaiser Permanente Northern California headquarters and administrative offices, medical offices, and medical centers. Our goal is to build and sustain a diverse, culturally competent workforce to meet the needs of the increasingly diverse Northern California communities we serve. As part of our team, KP LAUNCH interns help Kaiser Permanente shape the future of health care and create more equitable communities. To learn more about KP LAUNCH, please visit our website at [kplaunch.kaiserpermanente.org](http://kplaunch.kaiserpermanente.org)

### **Thriving Schools**

Thriving Schools is KP's initiative to improve the health and wellbeing of students, teachers, and staff in schools K-12. Collaborations exist with several school districts to address physical health, mental health, social health, racial justice, and access to care. The Thriving Schools website includes resources such as playbooks, training modules, assessments, educational theatre and webinars [kp.org/thrivingschools](http://kp.org/thrivingschools).

### **Educational Theatre**

KP Educational Theatre has inspired children, teens, and adults to make better decisions and lead healthier lives by offering free programs to schools and communities for over 35 years. Using the power of theatre and storytelling, our programs directly connect with students and adults through relatable characters and real-life situations. The programs feature contemporary music, humor, dance, and dialogue loaded with age-appropriate health information. These programs are provided at no cost to schools and nonprofits serving youth. Virtual program performances may be booked on the Educational Theatre website at [thrivingschools.kaiserpermanente.org/educational-theatre/educational-theatre-request-more-information/](http://thrivingschools.kaiserpermanente.org/educational-theatre/educational-theatre-request-more-information/).

### **Kaiser Permanente School of Allied Health Sciences**

Located in Richmond, CA, the Kaiser Permanente School of Allied Health Sciences offers programs in Medical Assisting, Nuclear Medicine, Phlebotomy, Radiography, a Master's Degree in Counseling, and Sonography.

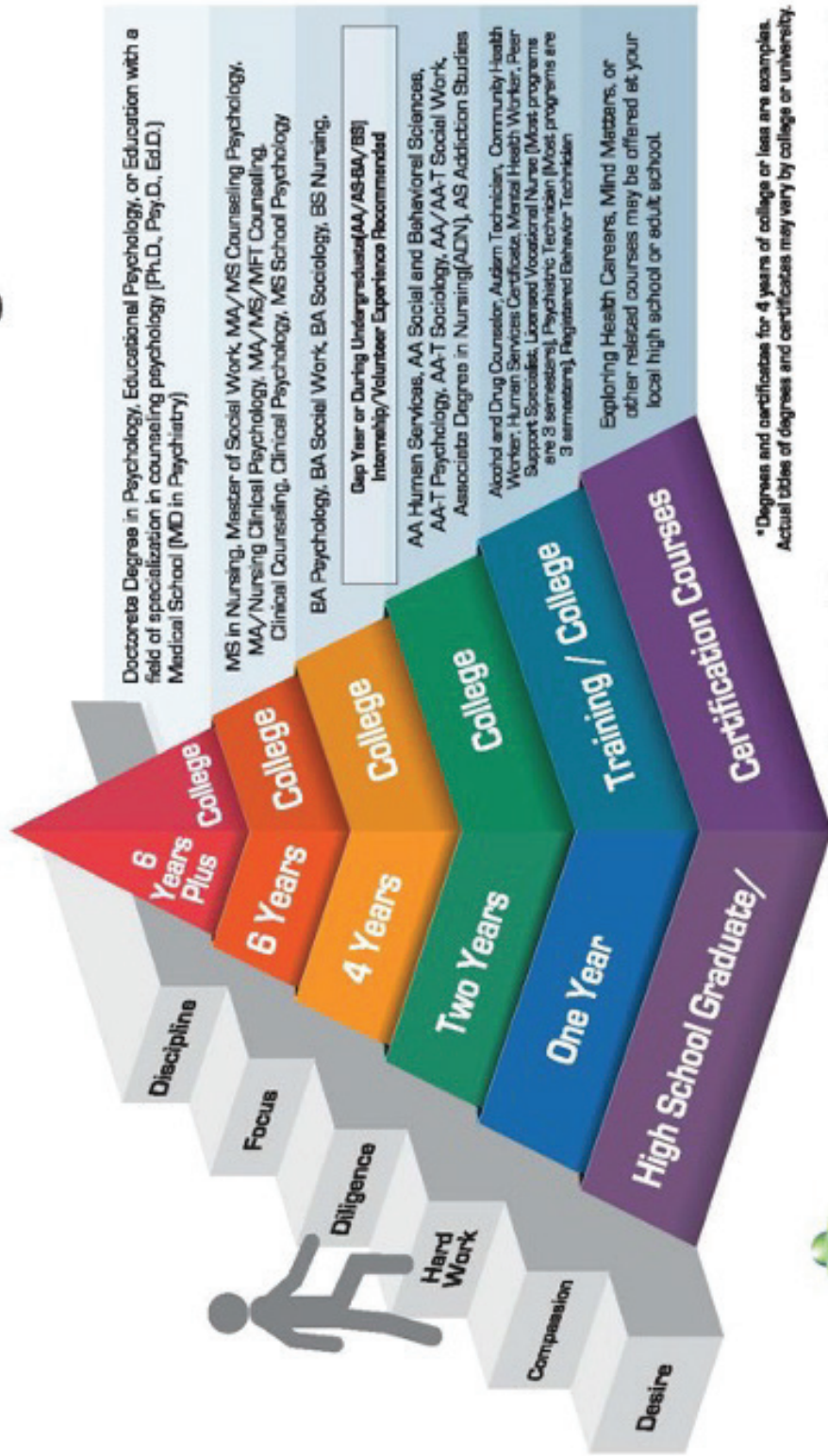
### **Kaiser Permanente Bernard J. Tyson School of Medicine - Modern, Integrated Medical Education for the Future | KPSOM**

Located in Pasadena, CA, the school leverages the values and capabilities of our integrated health system, and the unique relationship between the independent Permanente Medical Groups and the Kaiser Foundation Health Plan/Hospitals organization, to prepare students for future-facing clinical practice and health system leadership.

### **Kaiser Permanente School of Anesthesia (KPSA) - Kaiser Permanente School of Anesthesia**

Located in Pasadena, CA the Kaiser Permanente School of Anesthesia (KPSA) is a pioneer of graduate level nurse anesthesia education for baccalaureate nurses since its inception in 1972. With the support of Kaiser Permanente, and in conjunction with California State University Fullerton, KPSA is dedicated to providing an excellent educational program in achieving your dream and goal of becoming a nurse anesthetist.

# Behavioral-Mental Health Related Certificates and Educational Degrees



\*Degrees and certificates for 4 years of college or less are examples. Actual titles of degrees and certificates may vary by college or university.

**AA** = Associate in Arts  
**AA-T** = Associate in Arts for Transfer  
**AS** = Associate in Science  
**AS-T** = Associate in Science for Transfer  
**MA** = Master of Arts  
**MD** = Medical Doctor

**AA** = Associate in Arts  
**AA-T** = Associate in Arts for Transfer  
**AS** = Associate in Science  
**AS-T** = Associate in Science for Transfer  
**MA** = Master of Arts  
**MD** = Medical Doctor

**MFT** = Marriage and Family Therapist  
**MS** = Master of Science  
**MSW** = Master of Social Work  
**Ed.D** = Doctor of Education  
**Ph.D** = Doctor of Philosophy  
**Psy.D** = Doctor of Psychology

**HWI**  
Health Workforce Initiative  
<https://cs-hwi.org>

Adapted with permission from OneFuture Coachella Valley 2019

# Behavioral-Mental Health Jobs/Positions Related to Level of Education

**\*\*Licensed Practitioners:** Nurse Practitioner, Psychiatrist, School Psychologist (LEP), Psychologist, Licensed Professional Clinical Counselor (LPCC) Private Practice Mental Health Clinician/Therapist\*all license levels, Hospital/Hospice Social Worker (MSW/ASW/LCSW's only), Art Therapist, Supervisor with the County (APS/CPS), Program Director/Manager/Administrator  
Hospital Social Worker, Hospice Social Worker, Adult/Child Social Worker, Behavioral Analyst, School Social Worker/  
Counselor w/Pupil Personnel Services Credentials (PPS), Mental Health Clinician/Therapist with the following only ASW,  
APCC,AMFT (Must be supervised by a licensed professional), Pre-Licensed School Psychologist, Program Director/  
Manager/Administrator



**Master's  
Degree/  
Doctorate**



**Bachelor's  
Degree**



**Associate of  
Arts/Science  
Degree**



**Certificate  
Programs**



**High School  
Diploma/  
GED**

Behavioral Health Specialist/Designee, Assistant Behavioral Analyst, Case Manager, Care Coordinator, Vocational Rehabilitation Worker, Child Welfare Worker, Outreach Specialist, \*Psychiatric RN, \*Music Therapist

Gap Year or During Undergraduate(AA/AS-BA/BS)  
Internship/Volunteer Experience Recommended

\*ADN/RN,\*Alcohol and Drug Counselor,  
Community/Social Service Assistant, Eligibility Worker,  
Housing Coordinator, Mental Health Worker

APS = Adult Protective Services  
CPS = Child Protective Services  
ADN = Associate Degree in Nursing  
AMFT = Associate Marriage and Family Therapist  
APCC = Associate Professional Clinical Counselor  
ASW = Associate Clinical Social Worker  
LCSW = Licensed Clinical Social Worker  
LEP = Licensed Educational Psychologist  
LPCC = Licensed Professional Clinical Counselor  
LVN = Licensed Vocational Nurse  
MSW = Master of Social Work  
PMH = Psychiatric Mental Health Nurse  
RN = Registered Nurse

Alcohol and Drug Counselor, Autism Technician, Community Health  
Worker, Human Services Assistant/Worker, \*LVN, Mental Health  
Worker, Peer Support Specialist,\*Psychiatric Technician, Registered  
Behavior Technician

Office Support Staff, Advocate (Peer, Family, Housing)  
Peer Support Specialist, Parent Partner

\*/\*\*These certificates and licensed positions require a specific number of supervised training hours prior to taking a professional licensing exam. (See Behavioral-Mental Health Educational Career Pathway page for details)

**JOB/POSITION TITLES LISTED  
MAY DIFFER BY COUNTY/CITY**



**Health Workforce Initiative**  
<https://ca-hwi.org>



Adapted with permission from OneFuture Coachella Valley 2019



